

FLAT 12 MEADOWCROFT MEWS LONDON, SE6 4AP

£289,000
LEASEHOLD

This stunning 495 sq ft, one bedroom flat forms part of the modern development of Meadowcroft Mews, which sits on the corner of Rushey Green and George Lane. The property itself benefits from a large, open plan reception and kitchen area which leads to a spacious private balcony area. Off of the hallway is a modern bathroom suite and there is also a good sized bedroom.

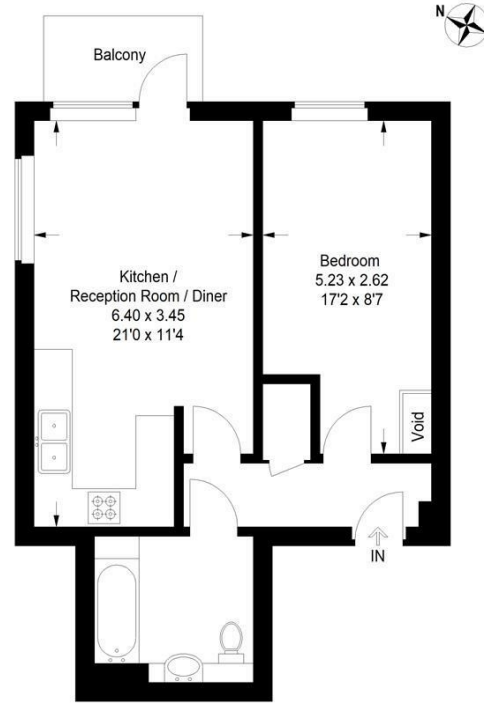
Meadowcroft Mews is ideally situated close to three mainline stations; Ladywell, Hither Green and Catford Bridge. All offering excellent links to; London Bridge, Blackfriars, Waterloo East, London Charing Cross, Cannon Street and beyond. There are also fantastic bus links along Rushey Green. You are also just moments away from two wonderful, leafy parks; Lewisham park, Ladywell Fields and Mountsfield Park, all of which are just within a few minutes walk away from the property. Lewisham Hospital is also just 0.2 miles away.

This property currently has a B2 EWS1 status so please check with your lender before offering.

DouglasPryce

Meadowcroft Mews

Approximate Gross Internal Area (Excluding Void)
46.0 sq m / 495 sq ft



Second Floor

Illustration for identification purposes only,
measurements are approximate.
Drawn for Douglas Pryce



Energy Efficiency Rating		
	Current	Potential
Very energy efficient - lower running costs		
(92 plus) A		
(81-91) B		
(69-80) C		
(55-68) D		
(39-54) E		
(21-38) F		
(1-20) G		
Not energy efficient - higher running costs		
England & Wales	EU Directive 2002/91/EC	

Agents Note: Whilst every care has been taken to prepare these particulars, they are for guidance purposes only. All measurements are approximate and are for general guidance purposes only and whilst every care has been taken to ensure their accuracy, they should not be relied upon and potential buyers/tenants are advised to recheck the measurements

Lettings
Verdant Lane
London
SE6 1LF

07887933642
glenn@douglaspryce.co.uk
www.douglaspryce.co.uk

DouglasPryce